



CONNECTIONS Blanton Volunteer News

NOVEMBER 2007

Contents

1. Orientations, Open House & Dessert

East Austin Studio Tour

Looking for Holiday Volunteers

Martha's Letter

2. A Winter Formal for Next B scene

New Rotations in the Glickman Galleries

Who's that giggling with the children?

Win Win Win

3. Blanton Volunteer Spotlight

What's in Store

Chris's World

Don't Touch

4. Dan's Corner

My first day volunteering at the Blanton



New volunteers are attending orientations every month this fall with the latest group being primarily UT sophomores who are interested in Art History as a major.

Photo: Martha Bradshaw



Orientations, Open House & Dessert

It's been a busy fall for Blanton volunteers. We met at Julie Schuler's home high on a hill in Westlake to review the fall volunteer schedule and share ideas about upcoming events. The gâteau Marisa from Upper Crust Bakery was delicious, along with all the yummy snacks and hor d'oeuvres that volunteers brought.

Join us for another stop on Mimi's dessert parade this December 13 when we meet at the Blanton for *Art Fix* and follow each other to Z Tejas downtown for warm fruit cobbler.

Be sure to get your volunteer training worksheet and complete it to learn more about the Blanton and our visitor needs.

A small group of volunteers met at Martha's house to discuss new training techniques and taste Mimi Deaton's white chocolate popcorn.

Photo: Martha Bradshaw

East Austin Studio Tour

On Saturday, November 17 we will meet at 1:00 p.m. at Progress Coffee, 500 San Marcos. That's at 4th and San Marcos – one block east of I-35 on 4th street. Phone: 493-0963. This is a fun way to see galleries and artist studios in the area. Ten to fifteen people came last year and we had a great time.

Looking for Holiday Volunteers

Join us the weekend after Thanksgiving or the week between Christmas and New Year's to help serve our visitors. All students will be gone for the holiday and we need extra community folks.

Martha's letter

It's such a pleasure to bring you another issue of *Connections*. We are having an exciting fall with three new shows opening. Mike Smith has been at the museum for myriad lectures, performances, and tours. We also hosted 2300 visitors in four hours during Austin Museum Day on September 23. The Blanton was at its best with volunteers, docents, and activities everywhere. If you want to participate in more fun like Museum Day, join us for Explore UT on Saturday, March 1. We'll need everyone's help to welcome all the families and visitors that attend.



Martha Bradshaw, Head of Visitor and Volunteer Services.
photo: Charla Wood



Visitors enjoyed many art making activities at the Blanton on Austin Museum Day 2007.

Photo: Rick Hall



Kristin Fields, Education Department Intern and Brian Whisenhunt, Manager of Public Programs, prepare an art activity for *B scene*.

Photo: Martha Bradshaw

Winter Formal for Next *B scene*

If you volunteer at *B scene*, you know the variety of people that come to see the art and enjoy partying with other art lovers. We usually have about 1,000 guests over the course of the evening. Volunteers help monitor the galleries to make sure there are no drinks or food taken into the galleries. They also assist guests with art activities. We are always looking for friendly greeters to help guests learn about activities, tours, and events for the evening. New rule: you must be over 21 to volunteer.

So, join us for “Winter Formal” on Friday, December 7 for a delightful evening of volunteering and art.

New Rotations in the Glickman Galleries December 8 – April 20

For those of you who are interested in learning more about Northern Renaissance prints after the close of the Dürer exhibition, intern Catharine Ingersoll will mount *Little Masters* exploring the work of Dürer’s contemporaries and successors. Also showing will be *Jacques Callot 1592–1635*, the first in a three-part series examining the Blanton’s extensive holdings of etching revival material and its inspiration. *British Drawings* from the eighteenth and nineteenth centuries and *Etching in Eighteenth-Century Venice* will round out the rotation.

Cheryl Snay, Assistant Curator, Prints and Drawings



Jacques Callot, *The Prince of Phalsbourg*, 1623
Etching, The Leo Steinberg Collection, 2002

4. Who’s that giggling with the children?

Stephanie Niemeyer is the Docent and Tour Coordinator at the Blanton. Stephanie’s main responsibility is to provide quality training sessions for the docents so that they are prepared to give tours in the galleries. She also designs tours, gives tours, and works with teachers who want to bring their students to the museum.

Before working at the Blanton, she spent five years at the Museum of Fine Arts, Houston as the Docent and Tour Programs Manager, a similar position to her one here, and she taught high school English for three years. Her undergrad degree is in history from The University of Texas at Austin, and she has a Master of Liberal Arts degree from the University of St. Thomas in Houston. Stephanie and her husband Terry have two cats, Max and Big Fuzzy.



Stephanie Niemeyer, center, Blanton Docent and Tour Coordinator.
Photo: Rick Hall

Win Win Win

Name four staff members, first name is okay, and win a prize. Special bonus for number five. E-mail Martha your answers.



1



2



3



4



5

Photos: Martha Bradshaw



Jill Schroeder, Volunteer.
Photo: Martha Bradshaw

Blanton Volunteer Spotlight

Meet Jill Schroeder, who also volunteers at Arthouse. She is new to Austin and wanted to learn more about the Blanton. With a BFA in Photography from the University of Minnesota, she enjoys food, wine, hanging out with her boyfriend Mark and her dog Maddy. She also loves to travel and just got back from a trip to Spain and Portugal. Jill says, "I recommend people come to the Blanton because it has everything from conceptual art to 15th - century art. There is something for everyone here."

Jill is completing her training worksheets and has attended several tours, including Mike Smith's and Kelly Baum's. She's almost ready for the test. When you see her, be sure to say hello!

What's in Store

Congratulations to our Blanton store for grossing over \$200,000 in sales for their first year. New arrivals come daily, especially this holiday season. Alex, Lena and Blandito invite you to come see the new gifts at the Blanton store, including one-of-a-kind leather purses, wallets and wrist bands.

For the holidays, don't miss the member double discount days from December 1 - December 9 and the holiday trunk show on Saturday and Sunday, December 8 and 9.



Alex Kosarek, Museum Store Assistant and Blandito
Photo: Martha Bradshaw



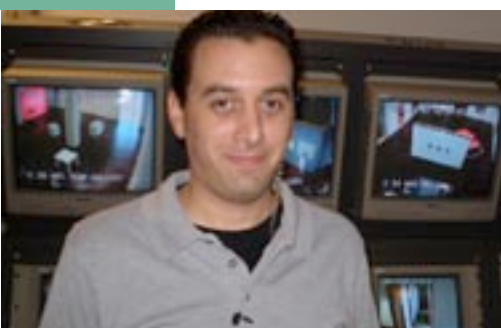
Lena Kwan, Museum Store Assistant, shows off new jewelry cases. Photo: Martha Bradshaw

Chris' World

Dear Volunteers,

I cannot begin to tell you how much you are appreciated amongst these walls. You have helped out in so many ways, from collecting and handing out audio guides to explaining our locker deposit system that I even have a hard time with from time to time. By doing this, you are helping the Gallery Assistant at the front door stay vigilant by screening what is coming in the building and more importantly, what is going out. As you all know, security of the Blanton's collection is my top priority so if a Gallery Assistant asks for your help please lend a hand with whatever they may need. This will ensure that their job of protecting the collection is not compromised by having to leave their post or route. Believe me, when you all aren't here, the Gallery Assistants definitely feel the increase in duty at the front door so please keep racking up those volunteer hours and recommend volunteering at the Blanton to all your friends!

Best,
Chris



Blanton Security Manager, Chris Seebach in his own world of TV screens.
Photo: Martha Bradshaw

Don't Touch

Next time you need to explain to a family with small children that we can't touch the artwork, you can start by asking if they saw Penetrable, the outdoor sculpture with the yellow rubber tubes. Follow up by saying, "You can touch that sculpture outside, but inside, there is no touching."

Jesús Rafael Soto, *Penetrable*, 1990
Steel, aluminum, and plastic hoses 508 x 508 x 508 cm (200 x 200 x 200 in.)
Colección Patricia Phelps de Cisneros. Copyright by Soto Estate
Photo: Rick Hall





Photo: Rick Hall

Richard Long
Summer Circle, 1991
Delabole slate
354 in. (899.16 cm)
Purchase as a gift in
honor of Jack S.
Blanton, Sr. by his
children, 2005

Meg Webster
Conical Depression,
1994/2007
Earth, ground cover
Gift of Jeanne and
Michael Klein, 2005.

CONNECTIONS

A quarterly newsletter published by staff and
volunteers of the Blanton Museum of Art

The University of Texas at Austin

1 University Station D 1303

Austin, Texas 78712

www.blantonmuseum.org

DEPARTMENT OF VISITOR & VOLUNTEER SERVICES

Martha Bradshaw, Head

Dan Boehl, Admissions Manager

Stephanie Rice, Events Coordinator

NEWSLETTER TEAM MEMBERS

Martha Bradshaw, Editor

Claude van Lingen, Layout Designer

CONTRIBUTING WRITERS:

Dan Boehl, Martha Bradshaw, Cathy Morris,
Stephanie Niemeyer, Chris Seebach, Cheryl Snay

Art is treasured. Albrecht Dürer: *Prints from the
Foundation of Lower Saxony and the Konrad
Liebmann Foundation, Germany*,
on view September 8-November 25.

Martha F. Bradshaw
Head of Visitor and Volunteer Services
Blanton Museum of Art
The University of Texas at Austin
1 University Station D1303
Austin, Texas 78712

DISCLAIMER: The Blanton Museum of Art does
not vouch for the accuracy of the content of the
volunteer articles published in this newsletter.

College of Fine Arts

2007@ Blanton Museum of Art.
All rights reserved.

Dan's Corner

Dear Volunteers,

Thanks for all your hard work and thanks
especially for lighting the place up with your
smiling faces! You make visiting the Blanton
a better experience!

In service to creating an interactive experience,
I have a couple of requests. Please be sure to
ask visitors if they want an Acoustiguide when
they enter and (brand new thing here) ask if
they would like to sign up for our E-newsletter
when they exit. The E-newsletter will tell them
about all the things they never knew they
wanted to know, like about *Artistic License*,
Bach Cantata, and *Dürer Lectures*!

Also, VVS is counting how many Acoustiguides we give out every
day. These numbers will help inform VVS about content for
special exhibitions. So please remember to record how many
Acoustiguides you hand out in the binder on the Acoustiguide
Cart!

In the service of awesome museum things,

Dan Boehl



Dan Boehl

Photo: Dan Borhl



Cathy Morris during her volunteer shift
on Friday afternoons.

Photo: Martha Bradshaw



Albrecht Dürer
*Knight, Death, and the
Devil*, 1513

Engraving

24.4 x 18.8 cm

Dürer Collection of the Konrad
Liebmann Foundation, Stiftung
Niedersachsen, Germany
L153.46

My first day volunteering at the Blanton...

The shrink-wrapped palettes, like modern soft sculptures, were
poised askew in corners of the freshly painted, roped-off galleries.
Agile curators and museum staff deliberately yet carefully pulled
the exhibition pieces from their veils. The stage was set for Dürer
to come to life against its majestic garnet backdrop. The poten-
tial...the mystery...

I will always remember the energy in the galleries that day...was
it just me or does this feeling arise for all of us each time a new
installation starts to take shape?

Cathy Morris, Volunteer